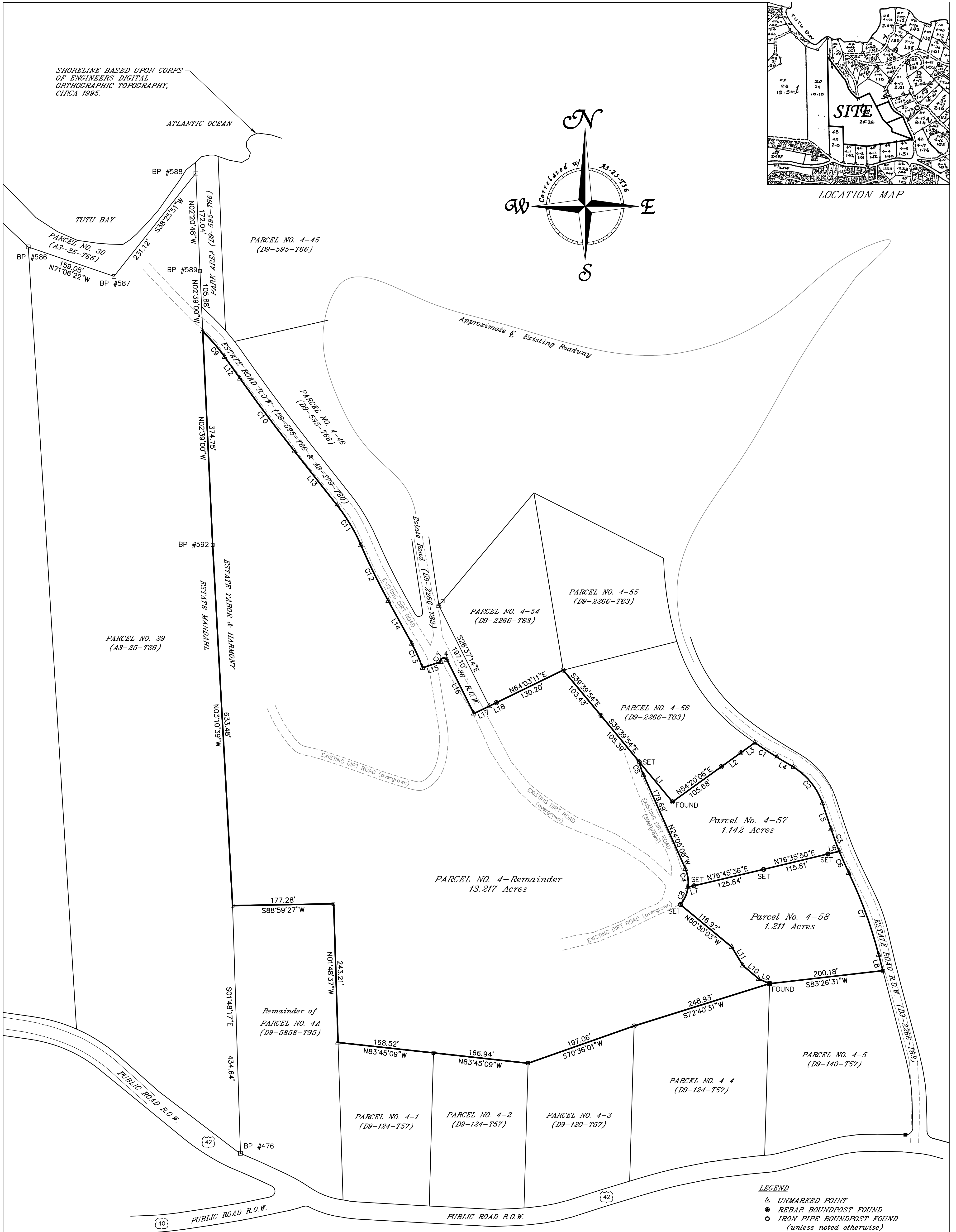
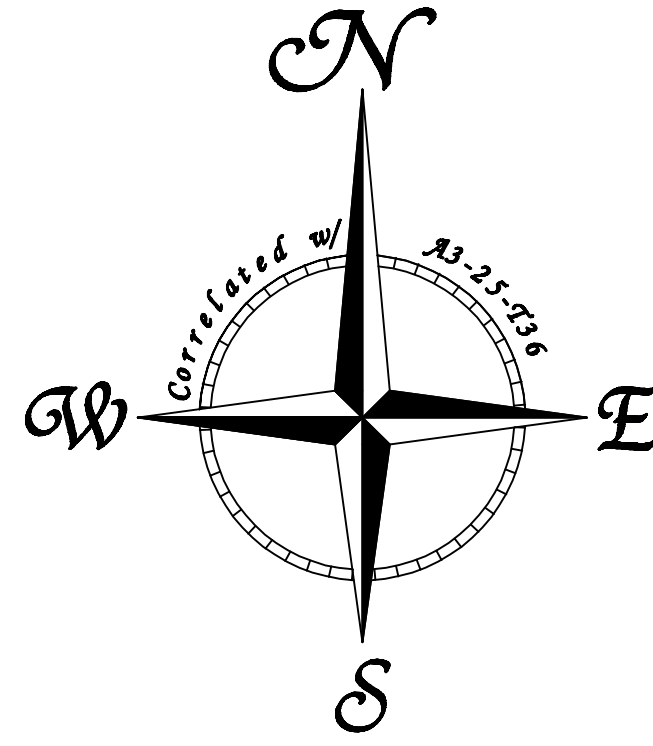
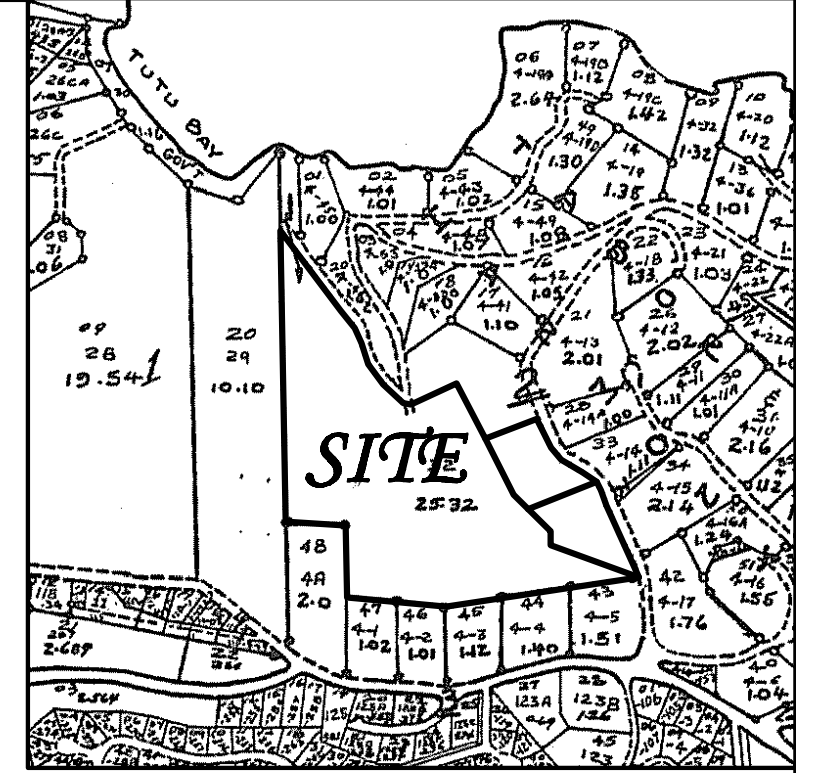


SHORELINE BASED UPON CORPS OF ENGINEERS' DIGITAL ORTHOGRAPHIC TOPOGRAPHY, CIRCA 1995.



LINE	LENGTH	BEARING
L1	91.28'	N39°39'54"W
L2	42.29'	N54°20'06"E
L3	29.97'	N54°20'06"E
L4	33.33'	S59°04'35"E
L5	48.08'	S18°24'48"E
L6	20.58'	S76°35'50"W
L7	10.37'	N76°45'36"E
L8	29.02'	S14°35'20"E
L9	20.74'	S66°15'17"E
L10	36.33'	N49°36'07"W
L11	37.79'	N30°52'48"W
L12	46.56'	S35°17'51"E
L13	121.05'	S38°20'39"E
L14	85.62'	S28°55'57"E
L15	33.32'	S71°31'49"W
L16	105.65'	S26°37'14"E
L17	30.15'	N64°03'11"E
L18	14.15'	N64°03'11"E

CURVE	LENGTH	RADIUS
C1	46.90	589.14
C2	82.96	116.89
C3	41.22	653.19
C4	33.42	60.00
C5	24.78	114.81
C6	41.22	653.19
C7	153.05	793.19
C8	33.40	60.00
C9	59.11	304.89
C10	159.25	2995.06
C11	81.24	309.61
C12	109.14	1112.36
C13	46.42	254.18
C14	16.88	5.93

NOTE:

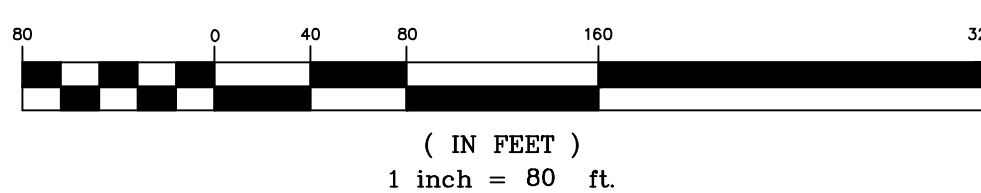
THIS MAP SUPERCEDES O.L.G. FILE No. A9-696-T006 FOR PARCEL No. 4-REMAINDER ONLY.

- LEGEND**
- △ UNMARKED POINT
  - REBAR BOUNDPOST FOUND
  - IRON PIPE BOUNDPOST FOUND (unless noted otherwise)
  - CONCRETE BOUNDPOST FOUND
  - 2" PVC w/ CONCRETE FOUND

**REFERENCE**  
A9-279-T80  
A9-696-T006

**ZONING**  
R-1

GRAPHIC SCALE



**BM & A** Brian Moseley Associates, Inc.  
Land Surveyors & Consultants  
4003 RAPHUNE HILL ROAD  
SUITE 606  
ST. THOMAS, VI 00802  
PHONE (340) 774-5310  
FAX (340) 776-4090

**Parcels No. 4-57, 4-58 and 4-Remainder**  
**Estate Tabor & Harmony**  
**No. 5 & 6 East End Quarter**  
**St. Thomas, U.S. Virgin Islands**

SURVEY: W.J.E.	DATE: 04-16-2013	DWG No: 1390-8
CALC: W.J.E.	APPROVED:	OLD FILE NO: A9-780-T013
DRAWN: W.J.E./D.J.S.	SCALE: 1" = 80'	